



SAP Business One Integration Hub

Overview

November 15th, 2019

PUBLIC

Be a successful digital company

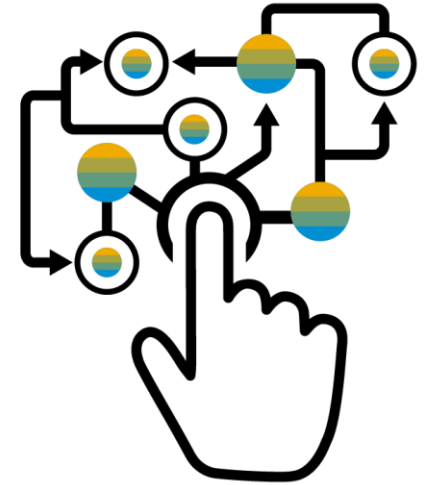
More and more companies are using established business platforms and service providers to be successful.

When using web shops, CRM systems, logistics services, communication providers, or other, the following questions always arise:

- *How can these cloud systems be integrated into the existing business processes of the company and ultimately into the ERP system, best highly automated?*
- *What does it cost? How long does it take?*

Here partners and customers always have the option of either programming customer-specific or using existing third-party solutions.

Now there is an additional option from SAP, the SAP Business One Integration Hub.



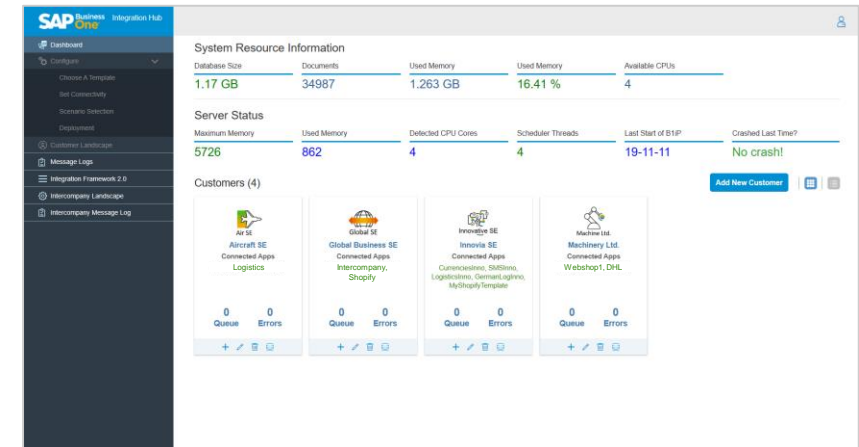
The SAP Business One Integration Hub

This add-on from SAP significantly expands SAP Business One by

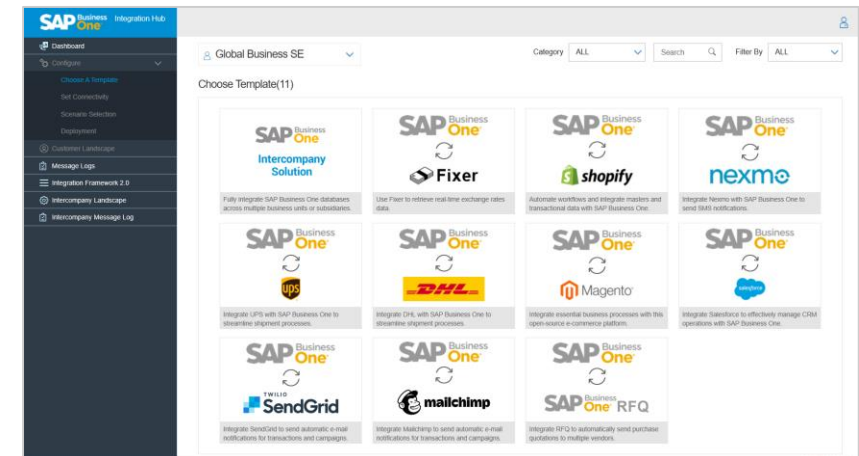
- Connecting cloud-based business applications and services to SAP Business One
- Harmonizing technology across multiple systems, data consistency across applications
- Delivering preconfigured integration templates with mapping and configuration defaults
- Guiding the user with very intuitive interfaces and wizards
- Placing UI elements per scenario seamlessly into SAP Business One

The Integration Hub currently includes preconfigured templates for

- (1) **Shopify®** – Cloud-based e-Commerce platform
- (2) **UPS®** (United Parcel Service) – Global shipping and logistics provider
- (3) **Nexmo®** – SMS service
- (4) **Fixer®** – Exchange rates API
- (5) **Magento®** – Cloud-based enterprise e-Commerce
- (6) **Salesforce®** – Cloud-based CRM Suite
- (7) **DHL®** – Global shipping and logistics provider
- (8) **Mailchimp®** – Cloud-based marketing and e-mail platform
- (9) **SendGrid®** – Cloud-based marketing and e-mail platform
- (10) **RFQ** - Request For Quotation with SAP Business One
- (11) **Intercompany solution** - Intercompany activities across databases



Dashboard



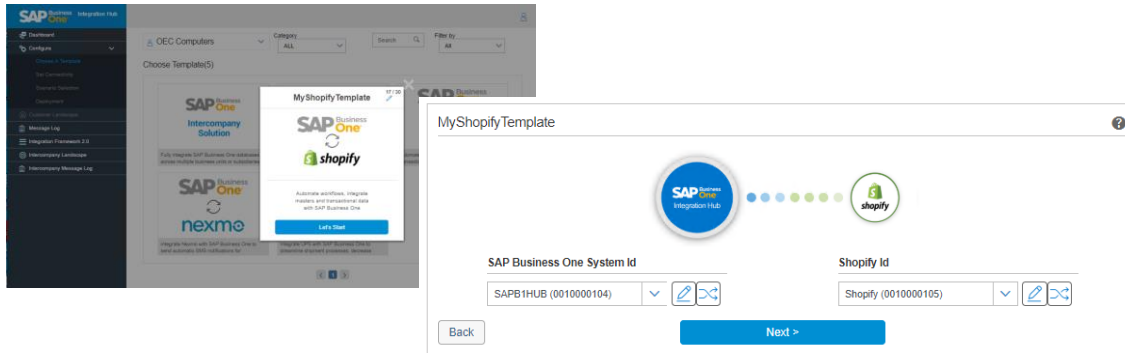
Template Overview

Integration Hub Flow

1)

Install the Integration Hub

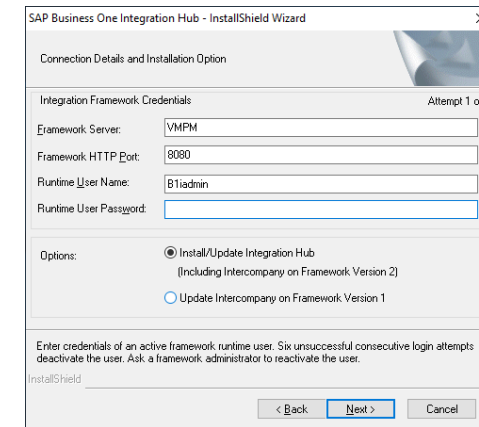
- Uploads the integration solution scenario package to B1iF 2.0
- Installs the Integration Hub Add-On on SAP Business One Client
- Sets up the SAP Business One Integration Hub Administration Console



2)

Administrate the Hub

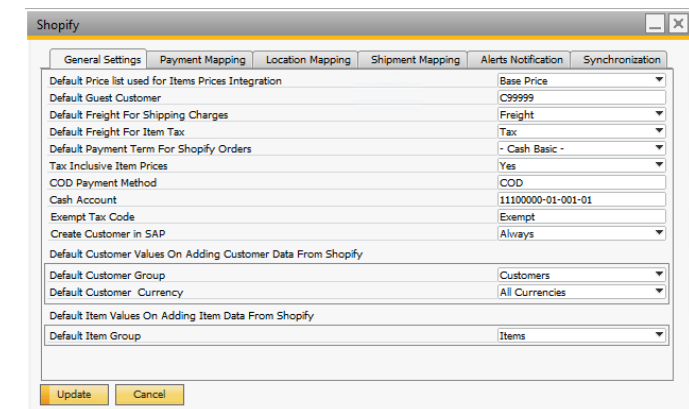
- Register Customer in the Integration Hub
- Set connectivity to Business One Database
- Select templates in the Hub
- Confirm mapping and configuration defaults
- Adds relevant UDF & UDT/new fields to document windows



3)

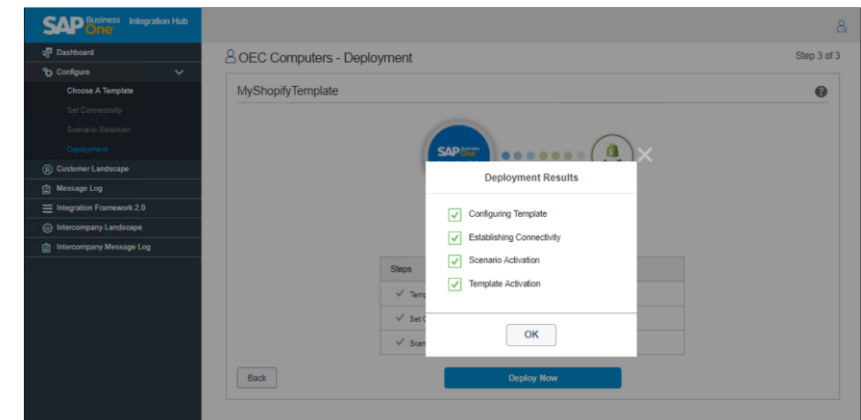
Finalize Customization in Business One Client

Check settings for Payment, Locations, Shipment, Alerts, and Synchronization



Quick Facts

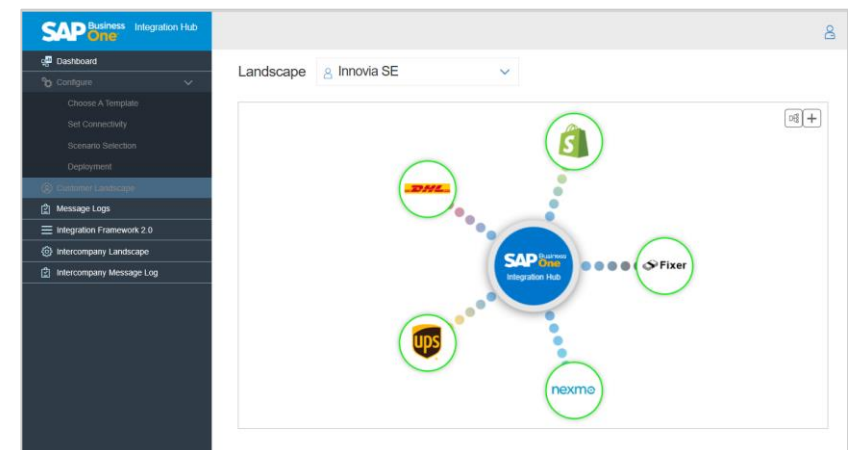
- Target group:** New and existing SAP Business One customers
- Positioning:** Predefined templates cover typical requirements of medium-sized customers
- Implementation:** Consultants or professionals at the customer
- Technical:** Based on latest SAP B1iF 2.0 technology
- Deployment:** On-premise or Cloud
- Licensing:** Intercompany Integration Solution License is required (each SAP Business One user), it covers the use of all scenarios
- Localization:** Currently localized for Germany, United Kingdom, and US. For any need beyond current localizations, see SAP Note [2844963](#)
- Languages:** All SAP Business One languages since PL35
- Download:** Included in Intercompany integration since PL34, installation requires SAP Business One 9.3 PL11 or higher.



Deployment Overview

Companies benefit more from digitization and increased efficiency:

- Integration, embedded data, and harmonization power the Intelligent Enterprise
- Streamlined operations, automated and optimized end-to-end business processes and data handling
- Seamless user experience by embedded UI-elements, easy to use
- Advantages and security of a standard solution by SAP, no 3rd party extension. Full support by SAP and embedded in other processes
- Predictable costs, one-time license. No transaction costs, monthly pricing or volume fees. Different scenarios can be used together, all have one license

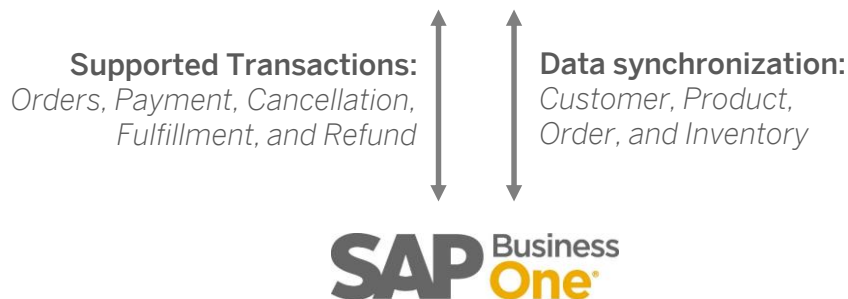


Example of customer landscape

Additional advantages of the SAP Business One Integration Hub:

- Rising demand for integration and complementary services can be answered with an SAP solution, Partners can better position SAP Business One
- Fast implementation. Scenarios with external platforms and services can be setup quickly, no technical/programming knowledge required, high ROI
- One common platform for various integration needs, no additional middleware and no external, additional data storage
- On-premise or cloud deployment gives full flexibility to customers and partners

Shopify (Cloud-based e-Commerce Platform)



Features

Easy customization of predefined master data and transaction synchronization:

Unidirectional synchronization from Shopify to SAP Business One for:

- Customer Data
- Orders (Order ID, Payment Method, Products, Discounts, Tax amounts, Freight, and more), Reserve Invoices, Incoming payment
- Credit Memo, Outgoing Payment

Bidirectional synchronization for:

- Products, Price, and Inventory information
- Delivery details

Benefits

Streamlined and automated business processes over numerous touch points

- Correct inventory info and accurate product listings in Shopify prevents overselling
- Immediate order information and handling ensures timely shipment to customers
- Accurate customer information avoids potential shipping problems
- No manual interaction and less erroneous data

United Parcel Services (Shipping and Supply Chain Management)



Features

- Business partner address validation of the Ship to and Bill To in Business Partner Master Data and Delivery documents (for US and Puerto Rico)
- Checking freight quotes based on the selected package type and defined dimensions per item
- Shipment tracking number

Benefits

- A smooth shipping process and efficient supply chain by having the relevant information
- Reduced manual interaction by automated processes to lower erroneous data

Delivery

Customer: C23900
Name: Parameter Technology
Contact Person: Daniel Brown
Customer Ref. No.:
Local Currency:

No.: Primary 1162
Status: Open
Posting Date: 11/15/2019
Delivery Date: 11/15/2019
Document Date: 11/15/2019

Contents **Logistics** **Accounting** **Attachments** **Integration Hub**

Ship To: 743 Filbert St
Main WH: Philadelphia PA 19106 USA

Bill To: 743 Filbert St
Bill To: Philadelphia PA 19106 USA

Shipping Type: UPS
Service: UPS Standard

Language: English

Tracking No.:
Stamp No.:

Pick and Pack Remarks:
BP Channel Name:

Nexmo (SMS Service)



Features

- Automatic SMS Notification based on Print Preferences in marketing documents: *Sales Quotation, Sales Order, Delivery, Return Request, Returns, A/R Down Payment, A/R Invoice, A/R Credit Memo, Purchase Quotation, Purchase Order, Goods Receipt PO, Goods Return Request, Goods Return, A/P Down Payment, A/P Invoice, A/P Credit Memo*
- Manual SMS notification
- SMS Notification for SMS type Campaigns

Benefits

- Better and faster communications with Customers or Business Partners

The screenshot shows the "Send Message" dialog box in SAP Business One. The "Subject" field is set to "Sales Order # {DocNum}" and the "Priority" is "Normal". Below this is a table with columns: #, To, Int., E-Mail, E-Mail Address, SMS, Telepho..., Fax, and Fax No. The first row shows a recipient "Max Teq" with a checked "E-Mail" box, "max.teq@maxi-teq.saj" as the email address, a checked "SMS" box, and phone numbers "91965026320" and "555-0138". Below the table are tabs for "Text", "SMS Text", "Data", and "Attachments". The "Text" tab is active, showing a message template: "Hi {CardName}, Your order # {DocNum} has been successfully created. Your order total is {DocCur} {DocTotal} & will be delivered by {DocDueDate}." At the bottom are buttons for "Send", "Cancel", "Send via HUB", "Save as Distribution List", and "Add Recipient".

Fixer (Currency Exchange Rate Import)



Features

- Automated retrieval of exchange rates via a simple API into SAP Business One
- Getting latest and historical exchange rates
- Converting amounts from one currency to another
- Automatically retrieve exchange rates daily or weekly by scheduler
- Retrieve exchange rates manually at any time (date range)

Benefits

- Up-to-date exchange rate information
- Reduces manual effort and error rate

DHL (Global shipping and logistics provider)



Features

- Business partner address validation of the Ship to and Bill To in Business Partner Master Data and Delivery documents
- Checking freight quotes based on the selected package type and defined dimensions per item
- Shipment tracking number

Benefits

- A smooth shipping process and efficient supply chain by having the relevant information
- Reduced manual interaction by automated processes to lower erroneous data
- Automated routine tasks

Mailchimp (Cloud-based marketing and e-mail platform)



Send Message

Subject: Sales Quotation # {DocNum} Priority: Normal

#	To	Int.	E-Mail	E-Mail Address	SMS	Telepho...	Fax	Fax No.
1	manager	<input type="checkbox"/>	<input checked="" type="checkbox"/>	robert@gmail.com	<input type="checkbox"/>		<input type="checkbox"/>	

Text SMS Text Data Attachments

Hi {CardName},

Sale Quotation # {DocNum} with total amount of {DocCur} {DocTotal} has been raised. It is valid till {DocDueDate}.

Please find the Sales Quotation copy in the attachment.

Regards,
{UserSign}

Send Cancel Send via HUB Save as Distribution List Add Recipient

Features

- Sends e-mail notifications automatically based on Print Preferences
- Facilitates manual e-mail notifications and supports e-mail type campaigns
- Pre-populates e-mail by predefined templates and placeholders
- Notification support for:
 - Sales Quotation
 - Sales Order
 - Delivery
 - Return Request
 - Returns
 - A/R Down Payment
 - A/R Invoice
 - A/R Credit Memo
 - Purchase Quotation
 - Purchase Order
 - Goods Receipt PO
 - Goods Return Request
 - Goods Return
 - A/P Down Payment
 - A/P Invoice
 - A/P Credit Memo

Benefits

- More personalized campaigns, less effort
- Engage customers with professional e-mail marketing
- Automated routine tasks
- Utilize insightful reporting and analytics of Mailchimp platform

RFQ (Request For Quotation with SAP Business One)



Features

- SAP Business One sends purchase quotations to business partners electronically
- Automatically generate a Web-based quotation submission form
- Business partners can directly submit their offers, data in SAP Business One is updated accordingly

Benefits

- Vendors can respond to quotes online
- Information in SAP Business One is updated in real-time
- Buyers can compare quotes, and place a purchase order on the best option, automatic entry in SAP Business One
- Automated routine tasks

Purchase Quotation **SAP Business One**

Reference: 5 Valid Until: 08.10.2019 Date Format: dd.MM.yyyy

Buyer: OEC Computers Company Name: Acme Associates Vendor Ref. No: OECUB1420111198

1901 Mayfield Drive
Suite 200
New York NY 10005
USA

879 Timbersprings Drive
Indiana PA 15701
USA

Contact Person: James Chan Requested Date: 18.10.2019

Line ID	Item ID	Item Description	Unit of Measure	Measure Unit	Required Quantity	Quoted Quantity	Price	Currency	Delivery Date	Remarks
0	A00001	J.B. Officeprint 1420	1.000000	1	50	50.000000	35.000000	\$	10.10.2019	
1	A00002	J.B. Officeprint 1111	1.000000	1	50	50.000000	38.000000	\$	10.10.2019	
2	A00003	J.B. Officeprint 1186	1.000000	1	50	50.000000	40.000000	\$	10.10.2019	

powered by Integration Framework

Cancel Submit



For more information, please see:

- SAP Business One Integration Hub on [SAP Help Portal](#)
- Administrator and User [Guide](#)
- SAP Note [2838864](#)
- [Central Blog](#)

(all subject to continuous updating, extension, and improvement)

Follow us



www.sap.com/contactsap

© 2019 SAP SE or an SAP affiliate company. All rights reserved.

No part of this publication may be reproduced or transmitted in any form or for any purpose without the express permission of SAP SE or an SAP affiliate company.

The information contained herein may be changed without prior notice. Some software products marketed by SAP SE and its distributors contain proprietary software components of other software vendors. National product specifications may vary.

These materials are provided by SAP SE or an SAP affiliate company for informational purposes only, without representation or warranty of any kind, and SAP or its affiliated companies shall not be liable for errors or omissions with respect to the materials. The only warranties for SAP or SAP affiliate company products and services are those that are set forth in the express warranty statements accompanying such products and services, if any. Nothing herein should be construed as constituting an additional warranty.

In particular, SAP SE or its affiliated companies have no obligation to pursue any course of business outlined in this document or any related presentation, or to develop or release any functionality mentioned therein. This document, or any related presentation, and SAP SE's or its affiliated companies' strategy and possible future developments, products, and/or platforms, directions, and functionality are all subject to change and may be changed by SAP SE or its affiliated companies at any time for any reason without notice. The information in this document is not a commitment, promise, or legal obligation to deliver any material, code, or functionality. All forward-looking statements are subject to various risks and uncertainties that could cause actual results to differ materially from expectations. Readers are cautioned not to place undue reliance on these forward-looking statements, and they should not be relied upon in making purchasing decisions.

SAP and other SAP products and services mentioned herein as well as their respective logos are trademarks or registered trademarks of SAP SE (or an SAP affiliate company) in Germany and other countries. All other product and service names mentioned are the trademarks of their respective companies.

See www.sap.com/copyright for additional trademark information and notices.